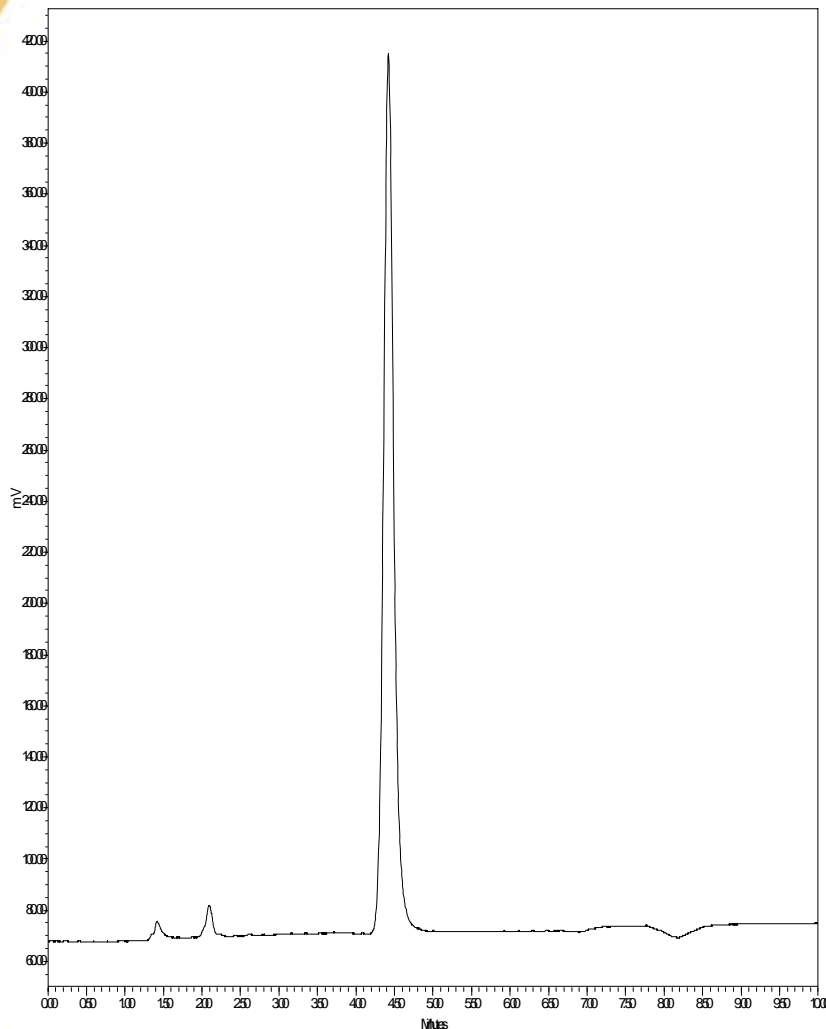




Melamine - HILIC

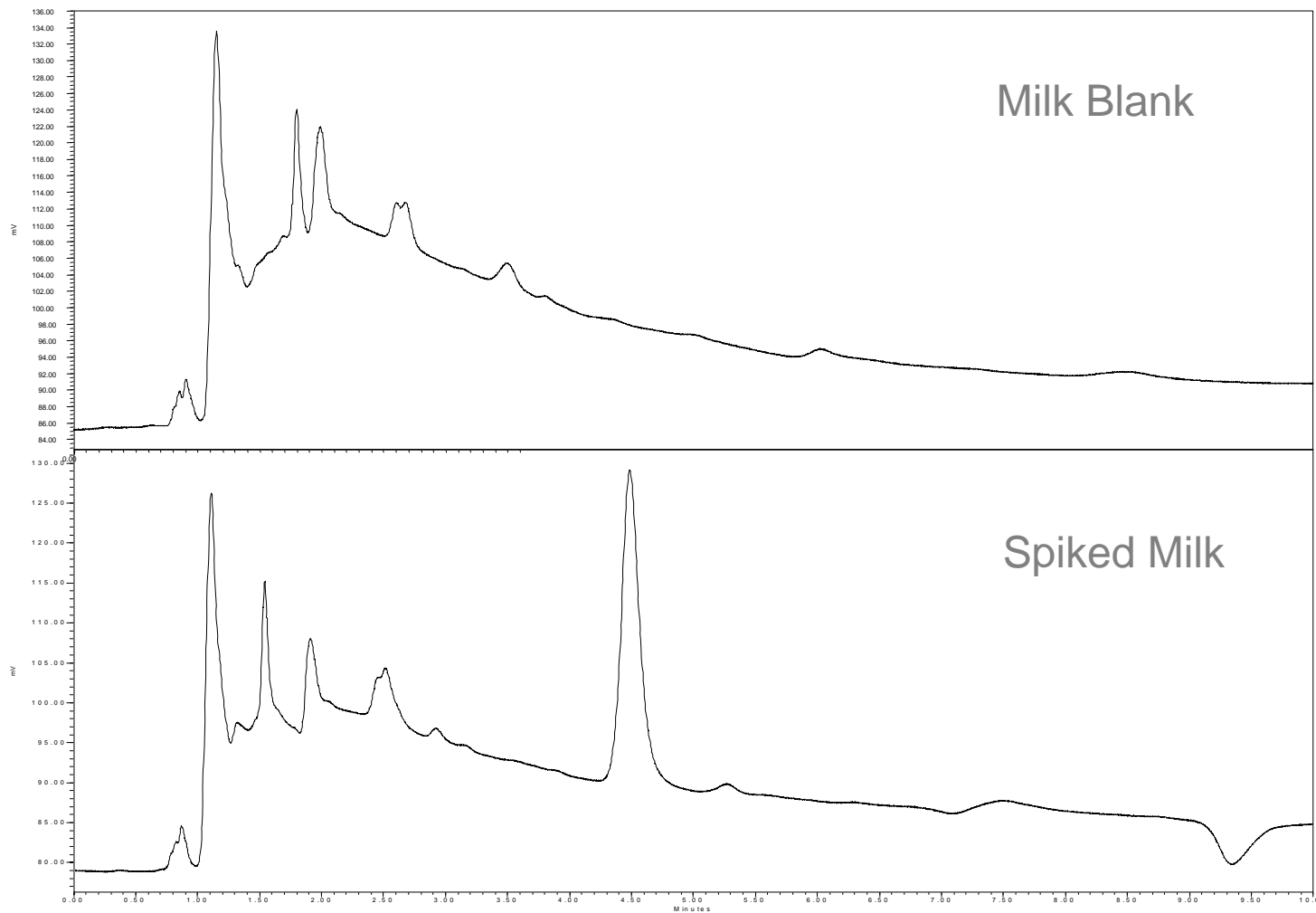


- Column : **Fortis HILIC 100x2.1mm 3 μ**
- p/n : **FHI-020503**
- Mobile Phase:
90:10 – ACN: + 20mM NH₃OAc
- Flow : **0.2ml/min**
- Temp : **20°C**
- λ : **210nm**

1. Melamine



Melamine - HILIC





Calibration Curve

