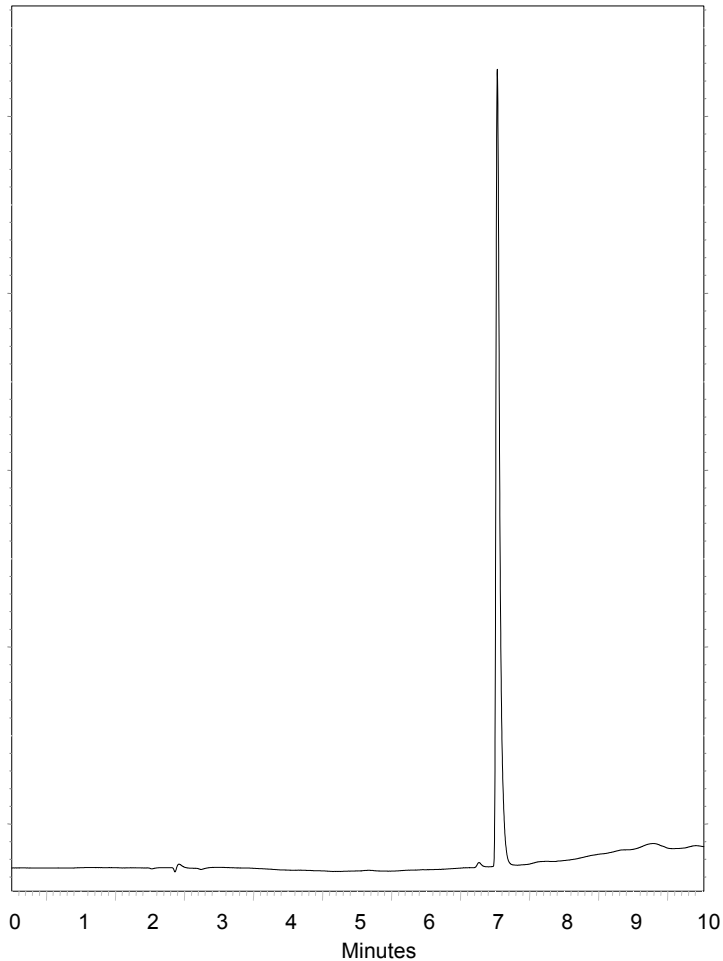


# Lamictal



- Column : Fortis C8 150x4.6mm 5 $\mu$
- p/n : F08-050705
- Mobile Phase:
  - A - H<sub>2</sub>O + 0.1% formic acid :
  - B – MeOH + 0.1% formic acid
- Gradient: 10 – 90% in 10mins
- Flow : 1ml/min
- Temp : 25oC
- $\lambda$  : 254nm

## 1. Lamotrigine