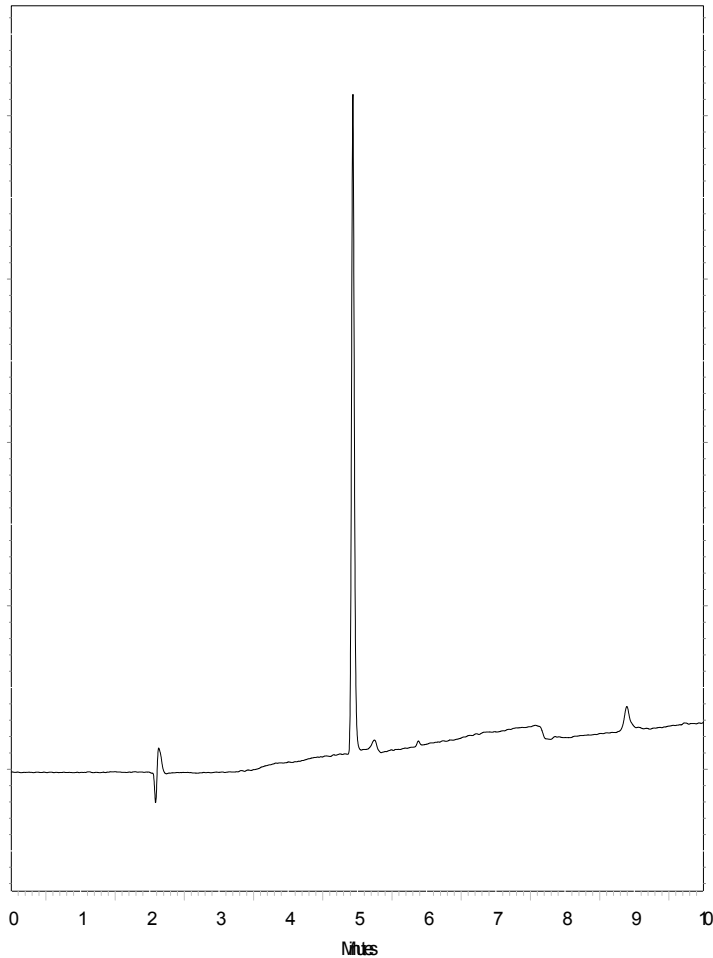


Losec



- Column : Fortis C18 100x4.6mm 5 μ
- p/n : F18-050503
- Mobile Phase:
 - A – H₂O + 0.1% Formic acid
 - B – ACN + 0.1% Formic acid
- Gradient: 10 – 100% in 10min
- Flow : 1ml/min
- Temp : 20°C
- λ : 254nm

1. Omeprazole