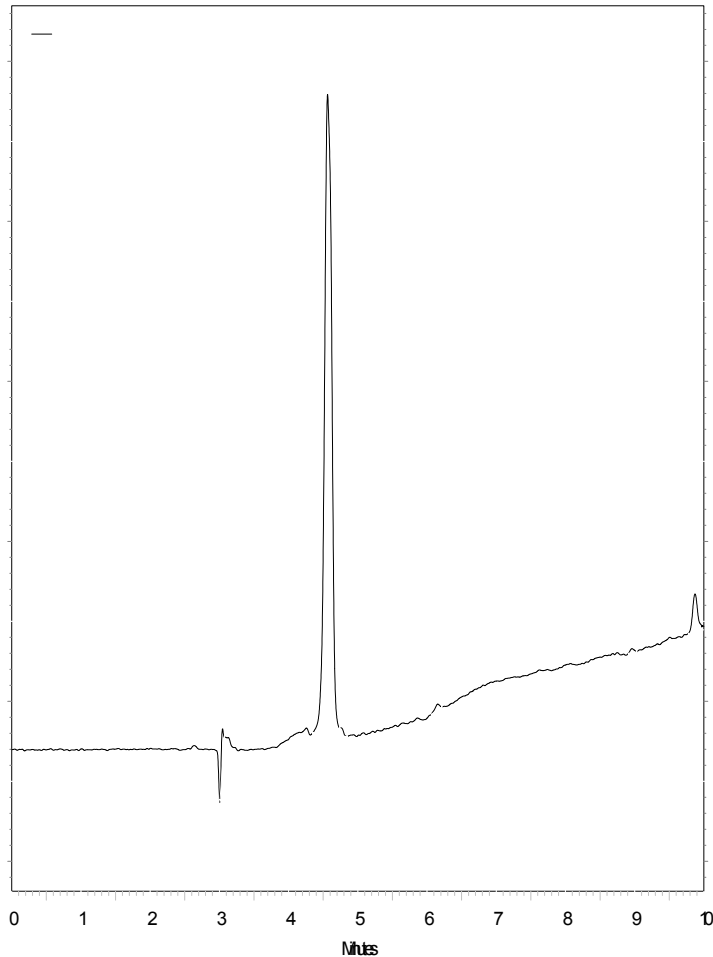


# Sotalol



- Column : Fortis C18 150x4.6mm 5 $\mu$
- p/n : F18-050705
- Mobile Phase:
  - A – H<sub>2</sub>O + 0.1% Formic acid
  - B – ACN + 0.1% Formic acid
- Gradient: 5 – 100% in 10min
- Flow : 1ml/min
- Temp : 20°C
- $\lambda$  : 254nm

## 1. Sotalol