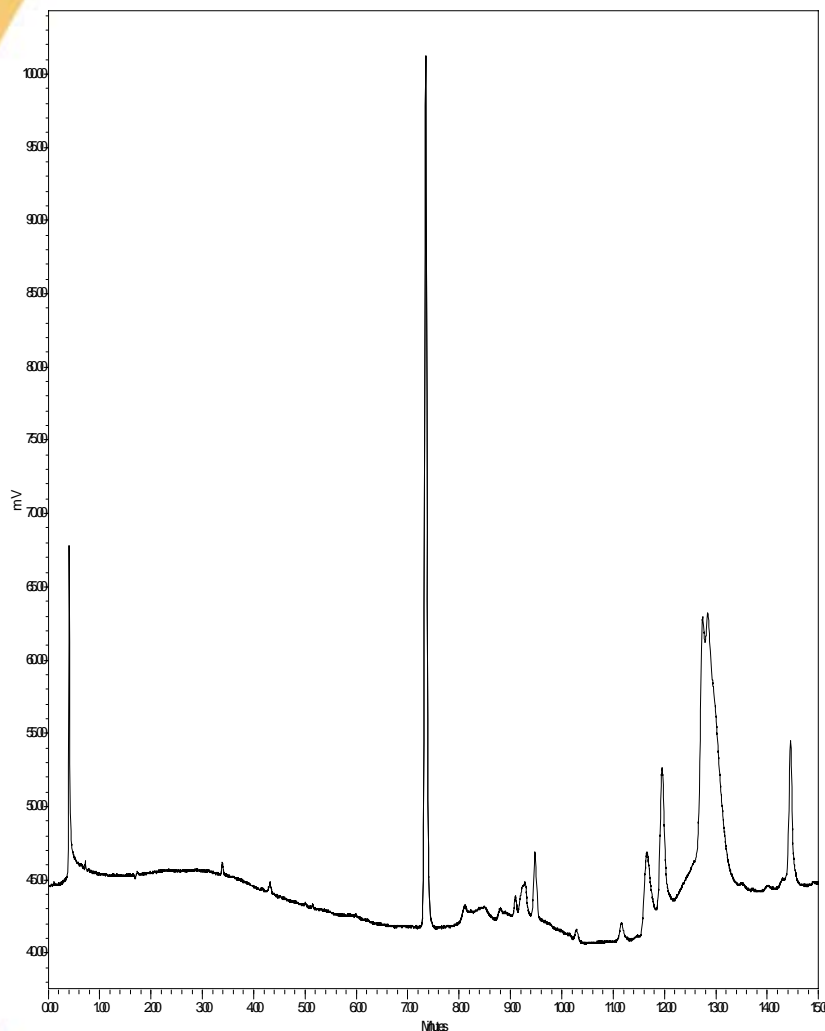




Tamiflu

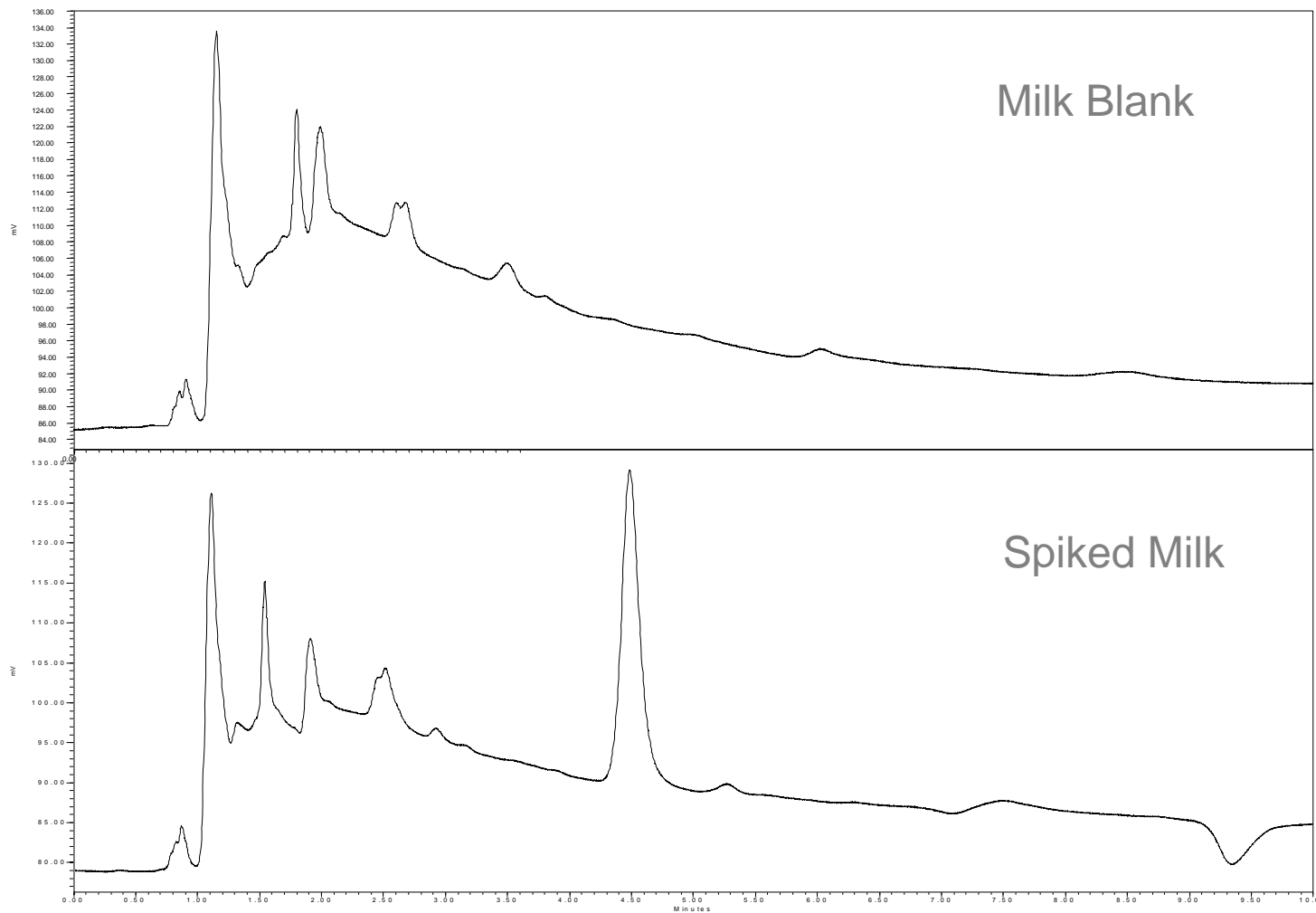


- Column : **Fortis C18 100x4.6mm 3 μ**
- p/n : **F18-050503**
- Mobile Phase:
90:10 – 100% in 15min
Water : ACN: + 0.1% NH₃
- Flow : **1.0ml/min**
- Temp : **20°C**
- λ : **254nm**

1. Tamiflu - Oseltamivir



Melamine - HILIC





Calibration Curve

